

CUB RUN LAND CHANTILLY, VIRGINIA

1.0 - 7.29 ACRES OF LAND FOR SALE/LEASE/BUILD-TO-SUIT

FOR MORE
INFORMATION
PLEASE
CONTACT

Bob Gibbs

Senior Vice President
703.905.0301
bob.gibbs@cbre.com

Tony Russo

Vice President
703.905.0210
tony.russo@cbre.com



SITE HIGHLIGHTS AND INFORMATION

- :: Size: 1.0 - 7.29 acres of land for sale/lease/build-to-suit
- :: Parking: \$55 per month, per car (20 minimum parking spaces)
- :: Land pricing: \$1.25 per SF (25,000 SF minimum - includes fencing & gravel)
- :: Sales price: Negotiable
- :: Term: One year (minimum)

CBRE, Inc. | 1861 International Dr | Suite 300 | McLean, VA 22102 | www.cbre.com/cubrunland

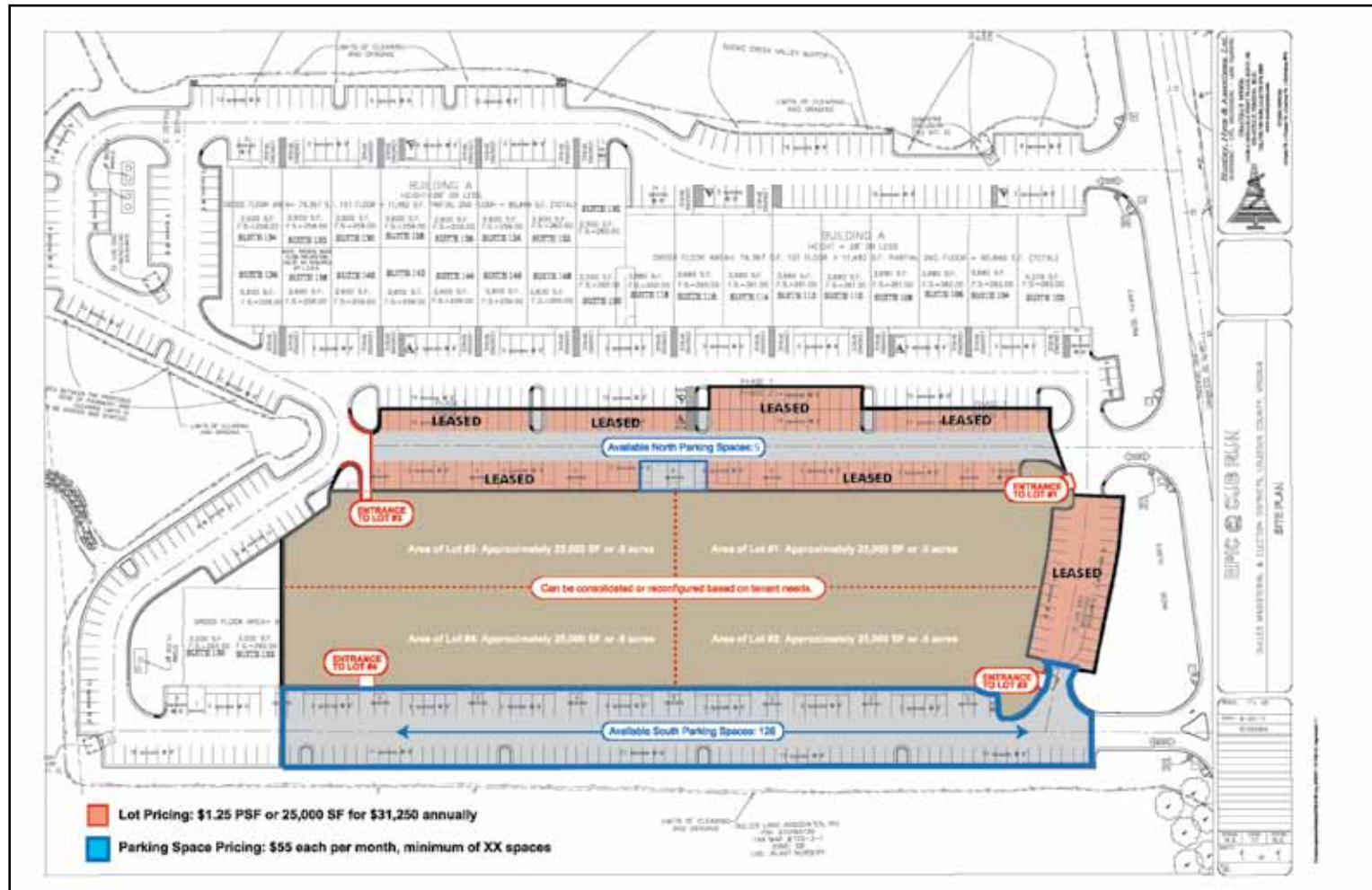
© 2012 CBRE, Inc. This information has been obtained from sources believed reliable. We have not verified it and make no guarantee, warranty or representation about it. Any projections, opinions, assumptions or estimates used are for example only and do not represent the current or future performance of the property. You and your advisors should conduct a careful, independent investigation of the property to determine to your satisfaction the suitability of the property for your needs.

CBRE

CUB RUN LAND CHANTILLY, VIRGINIA

1.0 - 7.29 ACRES OF LAND FOR SALE/LEASE/BUILD-TO-SUIT

PARKING LAYOUT



CUB RUN LAND **CHANTILLY, VIRGINIA**

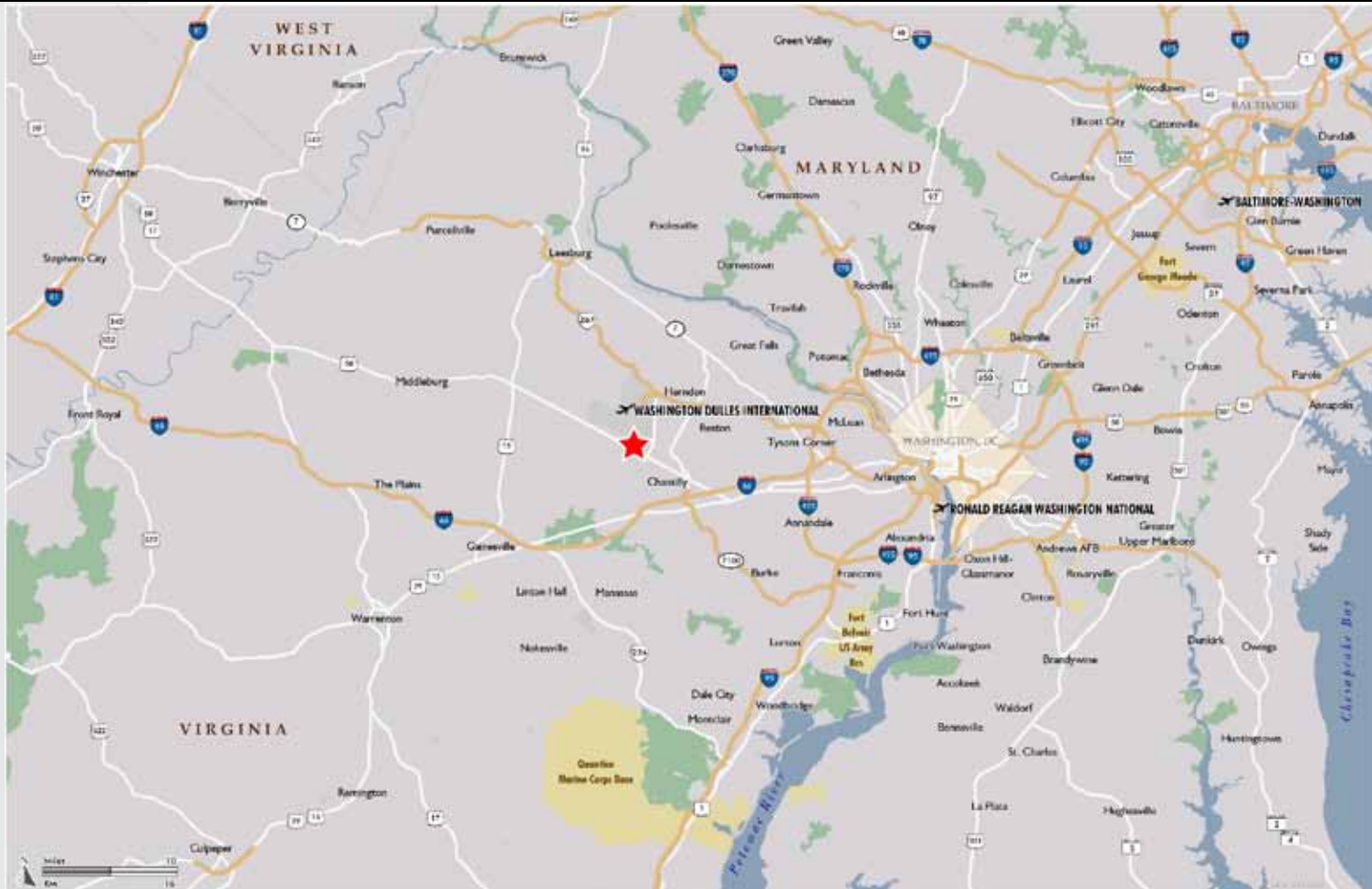
1.0 - 7.29 ACRES OF LAND FOR SALE/LEASE/BUILD-TO-SUIT



CUB RUN LAND CHANTILLY, VIRGINIA

1.0 - 7.29 ACRES OF LAND FOR SALE/LEASE/BUILD-TO-SUIT

REGIONAL MAP:



CBRE, Inc. | 1861 International Dr | Suite 300 | McLean, VA 22102 | www.cbre.com/cubrunland

© 2012 CBRE, Inc. This information has been obtained from sources believed reliable. We have not verified it and make no guarantee, warranty or representation about it. Any projections, opinions, assumptions or estimates used are for example only and do not represent the current or future performance of the property. You and your advisors should conduct a careful, independent investigation of the property to determine to your satisfaction the suitability of the property for your needs.

CBRE